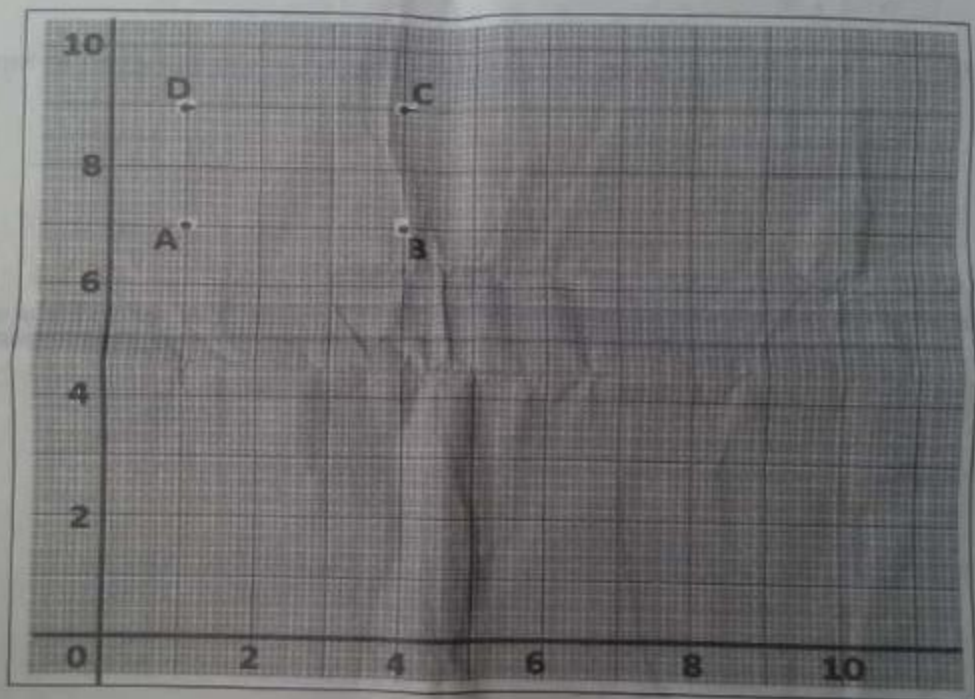


PART B

Part B consists of ONE essay and ONE comprehension question to be answered on the paper.

- (a) A school hired a bus for an excursion. They were charged GH¢500.00 deposit plus GH¢4.00 for every kilometer covered by the bus. If at the end of the excursion they paid a total of GH¢1,260.00 for the use of the bus, calculate the total distance covered by the bus.

(b) A rectangle ABCD is drawn on a grid as shown below. Use the information to answer the questions that follow.



- Write down the coordinates of the vertices A, B, C and D of the rectangle.
- Write down the coordinates of the point where the diagonals of the rectangle ABCD intersect.
- Draw on the same grid a rectangle $A_1B_1C_1D_1$ which is three times as long and two and a half times as wide as rectangle ABCD.
- What is the ratio of the perimeter of rectangle ABCD to the perimeter of rectangle $A_1B_1C_1D_1$.